

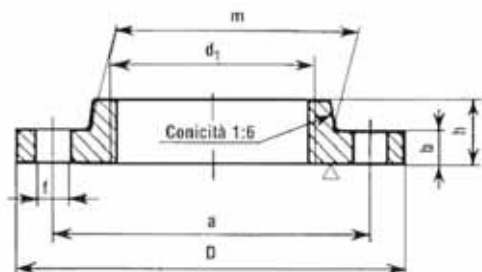
FLANGE
FLANGES



omec

Art. F2253 FLANGE FILETTATE (UNI 2253)

PN 6 THREADED FLANGES



M Ferro ST37

Sfuse

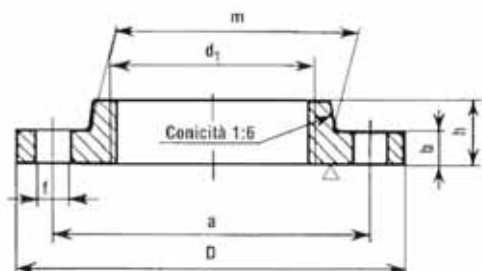
Zincate

N UNI 2253-67, EN 1092-1

CODE	DN	d1	D mm	h mm	a mm	f mm	b mm	Peso Kg.	Fori Viti M	€
F2253120	15	1/2"	80	20	55	11	12	0,45	4 10	10,385
F2253340	20	3/4"	90	24	65	11	14	0,68	4 10	13,590
F2253100	25	1"	100	24	75	11	14	0,82	4 10	15,576
F2253114	32	1.1/4"	120	26	90	14	14	1,17	4 12	19,828
F2253112	40	1.1/2"	130	26	100	14	14	1,4	4 12	22,872
F2253200	50	2"	140	28	110	14	14	1,59	4 12	25,008
F2253212	65	2.1/2"	150	32	130	14	14	2,17	4 12	31,698
F2253300	80	3"	190	34	150	18	16	3,2	4 16	46,420
F2253400	100	4"	210	38	170	18	16	3,59	4 16	52,089

Art. F2254 FLANGE FILETTATE (UNI 2254)

PN 16 THREADED FLANGES



M Ferro ST37

Sfuse

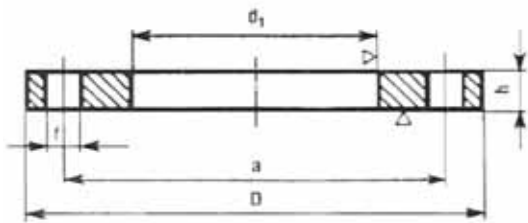
Zincate

N UNI 2254-67, EN 1092-1

CODE	DN	d1	D mm	h mm	a mm	f mm	b mm	Peso Kg.	Fori Viti M	€
F2254120	15	1/2"	95	22	65	14	16	0,70	4 12	14,283
F2254340	20	3/4"	105	26	75	14	18	1,05	4 12	19,545
F2254100	25	1"	115	28	85	14	18	1,21	4 12	24,113
F2254114	32	1.1/4"	140	30	100	18	18	1,76	4 16	28,965
F2254112	40	1.1/2"	150	32	110	18	18	2,04	4 16	31,132
F2254200	50	2"	165	28	125	18	18	2,85	4 16	34,403
F2254212	65	2.1/2"	185	32	145	18	18	3,53	8 16	46,316
F2254300	80	3"	200	34	160	18	20	4,24	8 16	61,893
F2254400	100	4"	220	40	180	18	20	4,90	8 18	65,547
F2254500	125	5"	250	44	210	18	22	6,60	8 18	88,336
F2254600	150	6"	285	44	240	22	22	8,50	8 22	119,326

Art. F2276 FLANGE PIANE DA SALDARE(UNI 2276)

PN 6 FLAT FLANGES



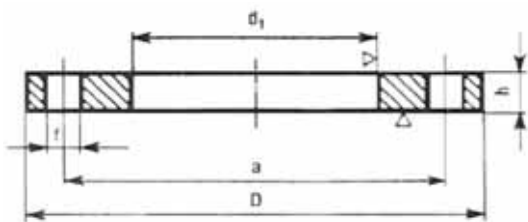
M Ferro ST37
Z Zincate
N UNI 2276-67, EN 1092-1



CODE	DN	d1	D mm	h mm	a mm	f mm	Peso Kg.	Fori Viti M		
F2276015	15	1/2"	80	12	55	11	0,34	4	10	6,608
F2276020	20	3/4"	90	14	65	11	0,51	4	10	7,166
F2276025	25	1"	100	14	75	11	0,62	4	10	8,169
F2276032	32	1.1/4"	120	16	90	14	1,09	4	12	13,165
F2276040	40	1.1/2"	130	16	100	14	1,26	4	12	15,148
F2276050	50	2"	140	16	110	14	1,38	4	12	16,218
F2276065	65	2.1/2"	160	16	130	14	1,68	4	12	20,375
F2276080	80	3"	190	18	150	18	2,63	4	16	32,299
F2276100	100	4"	210	18	170	18	2,92	4	16	35,690
F2276125	125	5"	240	20	200	18	3,90	8	16	45,139
F2276150	150	6"	265	20	225	18	4,78	8	16	49,847
F2276200	200	8"	320	22	280	18	6,91	8	16	72,066

Art. F2277 FLANGE PIANE DA SALDARE (UNI 2277)

PN 10 FLAT FLANGES



M Ferro ST37
Z Zincate
N UNI 2277-67, EN 1092-1

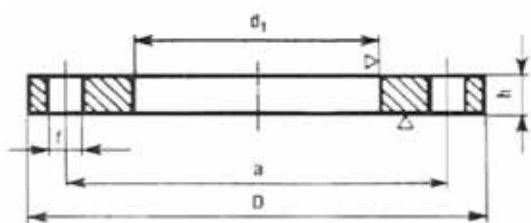


Dal DN 15 al 150 le caratteristiche ed i relativi prezzi sono uguali all'articolo F2278-67 PN 16

CODE	DN	d1	D mm	h mm	a mm	f mm	Peso Kg.	Fori Viti M		€
F2277080	80	3"	200	20	160	18	3,60	8	18	37,277
F2277200	200	8"	340	24	295	22	10,10	8	20	91,334
F2277250	250	10"	395	26	350	22	12,90	12	20	a richiesta
F2277300	300	12"	445	26	400	22	14,80	12	20	a richiesta
F2277350	350	14"	505	28	460	22	22,00	16	20	a richiesta
F2277400	400	16"	565	32	515	25	28,00	16	22	a richiesta
F2277450	450	18"	615	36	565	25	33,30	20	22	a richiesta
F2277500	500	20"	670	38	620	25	40,30	20	22	a richiesta
F2277600	600	24"	780	42	725	30	53,00	20	22	a richiesta

Art. F2278 FLANGE PIANE DA SALDARE(UNI 2278)

PN 16 SLIP-ON FLANGES



M Ferro ST37



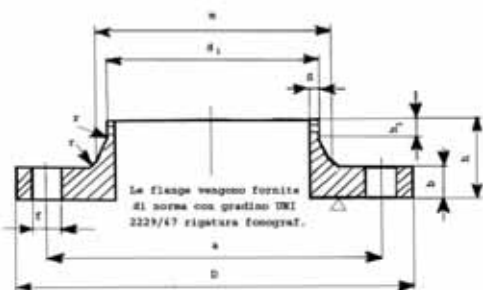
Zincate

N UNI 2278-67, EN 1092-1

CODE	DN	d1	D mm	h mm	a mm	f mm	Peso Kg.	Fori Viti M		€
F2278015	15	1/2"	95	14	65	14	0,67	4	12	12,081
F2278020	20	3/4"	105	16	75	14	0,83	4	12	12,513
F2278025	25	1"	115	16	85	14	1,03	4	12	13,330
F2278032	32	1.1/4"	140	18	100	18	1,66	4	16	20,289
F2278040	40	1.1/2"	150	18	110	18	1,89	4	16	23,120
F2278050	50	2"	165	19	125	18	2,46	4	16	27,328
F2278065	65	2.1/2"	185	20	145	18	3,00	4	16	30,554
F2278080	80	3"	200	20	160	18	3,61	8	16	35,622
F2278100	100	4"	220	22	185	18	4,40	8	16	43,489
F2278125	125	5"	250	22	210	18	5,92	8	16	53,580
F2278150	150	6"	285	24	240	22	7,17	8	20	68,151
F2278200	200	8"	340	26	295	22	9,77	12	20	92,882
F2278250	250	10"	405	29	355	25	16,00	12	22	a richiesta
F2278300	300	12"	460	32	410	25	19,30	12	22	a richiesta
F2278350	350	14"	520	35	470	25	29,40	16	22	a richiesta
F2278400	400	16"	580	38	525	30	36,50	16	27	a richiesta
F2278450	450	18"	640	42	585	30	46,13	20	22	a richiesta
F2278500	500	20"	715	46	650	33	64,00	20	22	a richiesta
F2278600	600	24"	840	52	770	36	80,64	20	22	a richiesta

Art. F2280 FLANGE A COLLARINO A SALDARE DI TESTA(UNI 2280)

PN 6 FLANGES WITH COLLAR



M Ferro ST37



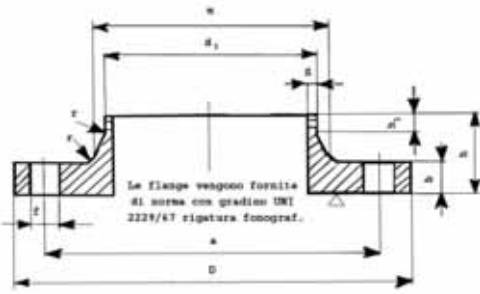
Zincate

N UNI 2280-67, EN 1092-1

CODE	DN	d1	D mm	h mm	a mm	f mm	b mm	Peso Kg.	Fori Viti M		€
F228025	25	1"	100	35	75	11	14	0,75	4	10	a richiesta
F228032	32	1.1/4"	120	35	90	14	14	1,10	4	12	20,153
F228040	40	1.1/2"	130	38	100	14	14	1,27	4	12	22,186
F228050	50	2"	110	38	110	14	14	1,43	4	12	24,176
F228065	65	2.1/2"	160	38	130	14	14	1,80	4	12	29,303
F228080	80	3"	190	42	150	18	16	2,90	4	14	47,567
F228010	100	4"	210	45	170	18	16	3,42	4	14	54,769
F228012	125	5"	240	48	200	18	18	4,70	8	16	75,114
F228015	150	6"	265	48	225	18	18	5,60	8	16	88,279
F228020	200	8"	320	55	280	18	20	8,70	8	16	144,820

Art. F2281 FLANGE A COLLARINO A SALDARE DI TESTA (UNI 2281)

PN 10 FLANGES WITH COLLAR



M Ferro ST37

Sfuse

Zincate

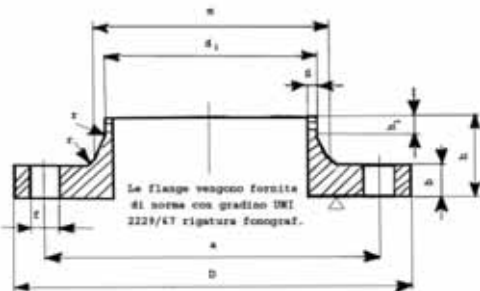
N UNI 2281-67, EN 1092-1

Dal DN 15 al 150 le caratteristiche ed i relativi prezzi sono uguali all'articolo F2282-67 PN 16

CODE	DN	d1	D mm	h mm	a mm	f mm	b mm	Peso Kg.	Fori	Viti M	
F2281080	80	3"	200	50	160	18	20	4,30	4	16	a richiesta
F2281200	200	8"	340	68	295	22	24	11,40	8	20	144,241
F2281250	250	10"	395	68	350	22	26	15,20	12	20	a richiesta
F2281300	300	12"	445	68	400	22	26	18,20	12	20	a richiesta
F2281350	350	14"	505	68	460	22	26	24,50	16	20	a richiesta
F2281400	400	16"	565	72	515	25	26	29,50	16	22	a richiesta
F2281450	450	18"	615	72	565	25	26	34,00	20	22	a richiesta
F2281500	500	20"	670	75	620	25	28	39,50	20	22	a richiesta
F2281600	600	24"	780	80	725	30	28	56,00	20	27	a richiesta

Art. F2282 FLANGE A COLLARINO A SALDARE DI TESTA (UNI 2282)

PN 16 FLANGES WITH COLLAR



M Ferro ST37

Sfuse

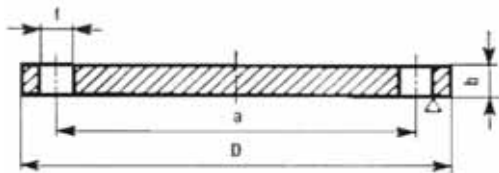
Zincate

N UNI 2282-67, EN 1092-1

CODE	DN	d1 mm	D mm	h mm	a mm	f mm	b mm	Peso Kg.	Fori	Viti M	€
F2282015	15	1/2"	95	38	65	14	14	0,73	4	12	15,491
F2282020	20	3/4"	105	40	75	14	16	1,03	4	12	20,692
F2282025	25	1"	115	40	85	14	16	1,23	4	12	22,793
F2282032	32	1.1/4"	140	42	100	18	16	1,80	4	16	30,145
F2282040	40	1.1/2"	150	45	110	18	16	2,08	4	16	34,826
F2282050	50	2"	165	45	125	18	18	2,78	4	16	35,787
F2282065	65	2.1/2"	185	45	145	18	18	3,40	4	16	43,851
F2282080	80	3"	200	50	160	18	20	4,2	8	16	53,480
F2282100	100	4"	220	52	180	18	20	4,75	8	16	60,714
F2282125	125	5"	250	55	210	18	22	6,45	8	16	82,720
F2282150	150	6"	285	55	240	22	22	8,00	8	20	102,717
F2282200	200	8"	340	62	295	22	24	11,10	12	20	143,448
F2282250	250	10"	405	70	355	25	26	16,30	12	22	a richiesta
F2282300	300	12"	460	78	410	25	28	21,80	12	22	a richiesta
F2282350	350	14"	520	82	470	25	30	29,20	16	22	a richiesta
F2282400	400	16"	580	85	525	30	32	37,00	16	27	a richiesta
F2282450	450	18"	640	83	585	30	32	45,40	20	27	a richiesta
F2282500	500	20"	715	84	650	33	34	61,10	20	30	a richiesta
F2282600	600	24"	840	88	770	36	36	84,60	20	33	a richiesta

Art. F6091 FLANGE CIECHE (UNI 6091)

PN6 BLIND FLANGES



M Ferro ST37

Zincate

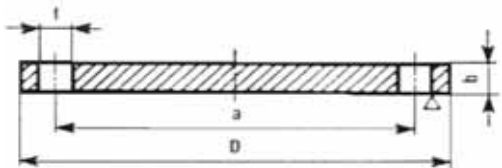
N UNI 6091-67, EN 1092-1

Sfuse

CODE	DN	D mm	b mm	a mm	f mm	Peso Kg.	Fori	Viti M	€
F6091025	25	100	14	75	11	0,82	4	10	9,390
F6091032	32	120	14	90	14	1,17	4	12	13,228
F6091040	40	130	14	100	14	1,39	4	12	15,583
F6091050	50	140	14	110	14	1,62	4	12	17,107
F6091065	65	160	14	130	14	2,14	4	12	22,336
F6091080	80	190	16	150	18	3,43	4	16	35,789
F6091100	100	210	16	170	18	4,22	4	16	44,047
F6091125	125	240	18	200	18	6,11	8	16	62,139
F6091150	150	265	18	225	18	7,51	8	16	76,476
F6091200	200	320	20	280	18	12,30	8	16	124,994

Art. F6092 FLANGE CIECHE (UNI 6092)

PN 10 BLIND FLANGES



M Ferro ST37

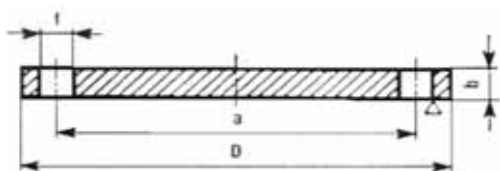
Zincate

N UNI 6092-67, EN 1092-1

Sfuse

Dal DN 15 al 150 le caratteristiche ed i relativi prezzi sono uguali all'articolo F6093 PN 16

CODE	DN	D mm	b mm	a mm	f mm	Peso Kg.	Fori	Viti M	€
F6092080	80	200	20	160	18	4,70	8	16	46,297
F6092200	200	340	24	295	22	16,50	8	20	155,925
F6092250	250	395	26	350	22	24,10	12	20	a richiesta
F6092300	300	445	26	400	22	30,80	12	20	a richiesta
F6092350	350	505	26	460	22	39,60	16	20	a richiesta
F6092400	400	565	26	515	25	49,60	16	22	a richiesta
F6092450	450	615	26	565	25	58,60	20	22	a richiesta
F6092500	500	670	28	620	25	75,30	20	22	a richiesta
F6092600	600	780	30	725	30	123,76	24	27	a richiesta
F6092700	700	895	30	840	33	144,16	24	27	a richiesta
F6092800	800	1015	33	950	33	260,00	24	27	a richiesta

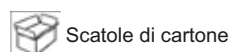
Art. F6093 FLANGE CIECHE (UNI 6093)
PN 16 BLIND FLANGES

M Ferro ST37


Zincate

N UNI 6093-67, EN 1092-1

CODE	DN	D mm	b mm	a mm	f mm	Peso Kg.	Fori	Viti M	€
F6093015	15	95	16	65	14	0,71	4	12	13,942
F6093020	20	105	18	75	14	1,01	4	12	16,003
F6093025	25	115	18	85	14	1,22	4	12	17,371
F6093032	32	140	18	100	18	1,80	4	16	21,243
F6093040	40	150	18	110	18	2,09	4	16	24,365
F6093050	50	165	18	125	18	2,87	4	16	28,647
F6093065	65	186	18	145	18	3,65	4	16	35,127
F6093080	80	200	20	160	18	4,61	8	16	45,860
F6093100	100	220	20	180	18	5,65	8	16	56,204
F6093125	125	250	22	210	18	8,12	8	16	77,091
F6093150	150	285	22	240	22	10,50	8	20	99,539
F6093200	200	340	24	295	22	16,50	12	20	157,693
F6093250	250	405	26	355	25	25,10	12	22	a richiesta
F6093300	300	460	28	410	25	35,20	12	22	a richiesta
F6093350	350	520	30	470	25	48,20	16	22	a richiesta
F6093400	400	580	32	525	30	63,50	16	27	a richiesta
F6093450	450	640	40	585	30	96,50	20	27	a richiesta
F6093500	500	715	44	650	33	133,00	20	30	a richiesta
F6093600	600	840	54	770	36	226,50	24	27	a richiesta

Art. FB BULLONI E DADI PER FLANGE
SCREWS AND NUTS FOR FLANGE

M Ferro ST37


Zincati

CODE	CONF.	VITE M mm	DADO M mm	TYPE	€
FB001045	100	10 X 45	10 X 10	Bullone e dado	0,826
FB001250	100	12 X 50	12 X 10	Bullone e dado	1,271
FB001255	100	12 X 55	12 X 10	Bullone e dado	1,323
FB001660	100	16 X 60	16 X 13	Bullone e dado	0,985
FB001665	100	16 X 65	16 X 13	Bullone e dado	2,116
FB001670	100	16 X 70	16 X 13	Bullone e dado	2,211
FB002080	50	20 X 80	20 X 16	Bullone e dado	4,176
FB002280	25	22 X 80	22 X 18	Bullone e dado	4,439
FB002290	25	22 X 90	22 X 18	Bullone e dado	4,781
FB002210	25	22 X 100	22 X 18	Bullone e dado	5,291

